

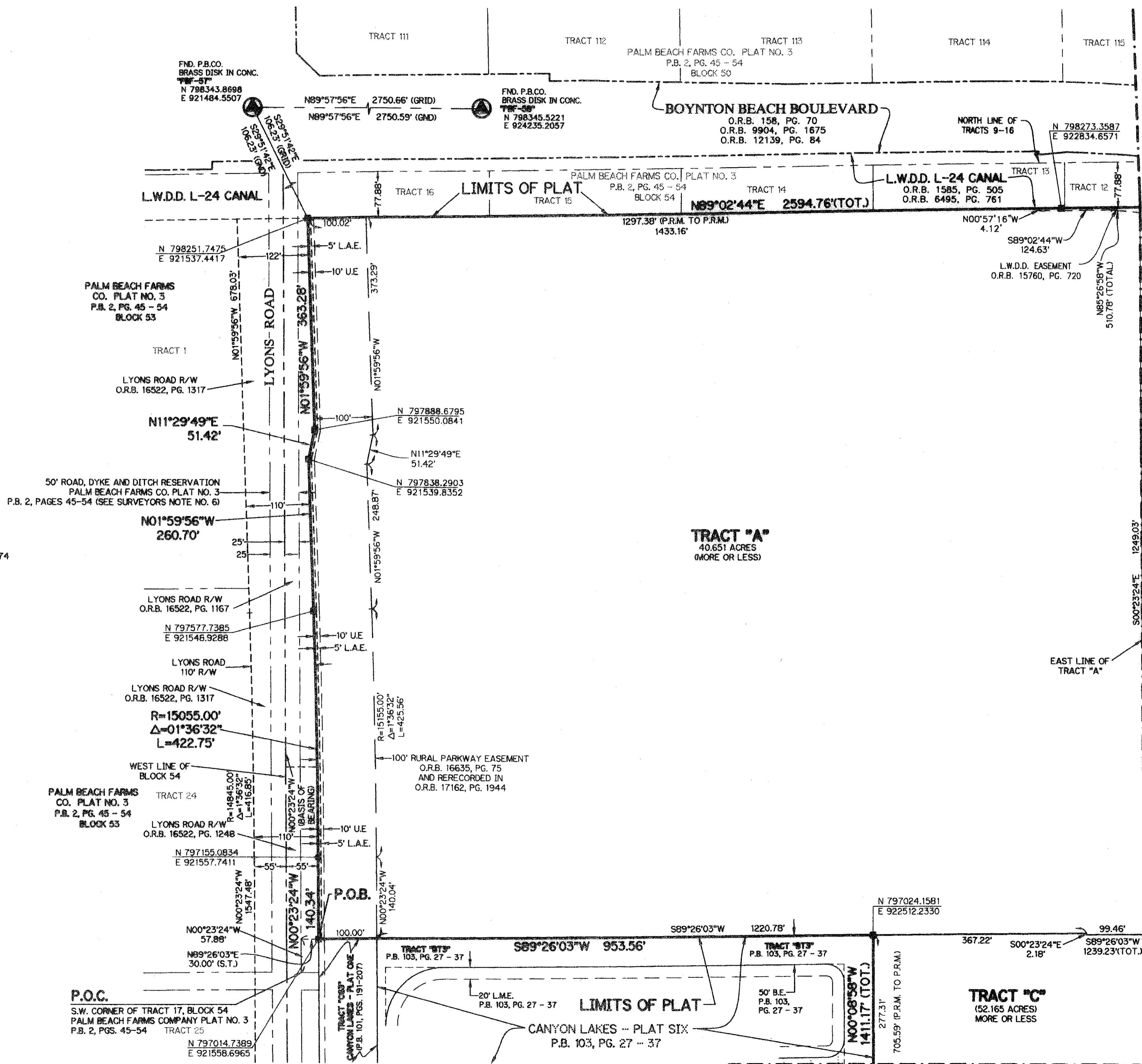
6

# BOYNTON - LYONS

BEING A REPLAT OF A PORTION OF TRACTS 9 THROUGH 19, 24, 41, 46, 51 AND 56 AND ALL OF TRACTS 20 THROUGH 23, 42 THROUGH 45 AND 52 THROUGH 55 AND A PORTION OF THE ROAD, DYKE AND DITCH RESERVATIONS, 30 FEET IN WIDTH, ABUTTING SAID TRACTS, BLOCK 54, PALM BEACH FARMS CO. PLAT NO. 3, AS RECORDED IN PLAT BOOK 2, PAGE 45, PUBLIC RECORDS, PALM BEACH COUNTY, FLORIDA ALL LYING WITHIN SECTIONS 29 AND 30, TOWNSHIP 45 SOUTH, RANGE 42 EAST, PALM BEACH COUNTY, FLORIDA

SHEET 2 OF 4

OCTOBER, 2006

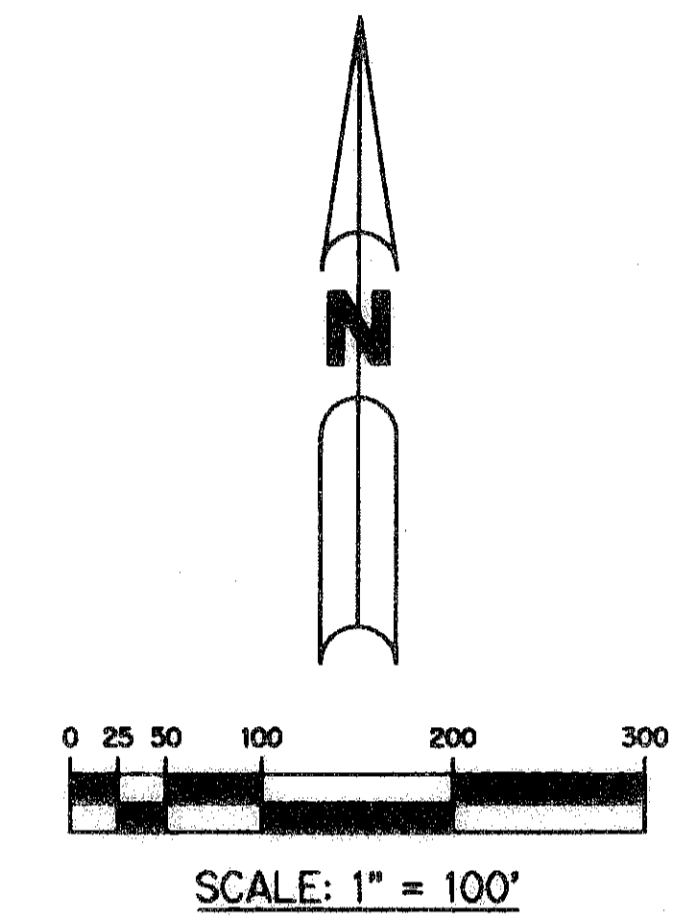


### NOTE:

COORDINATES SHOWN ARE GRID COORDINATES  
 DATUM = NAD 83, 1990 ADJUSTMENT AS READJUSTED  
 BY PALM BEACH COUNTY IN 1996  
 ZONE = FLORIDA EAST ZONE  
 LINEAR UNIT = U.S. SURVEY FEET  
 COORDINATE SYSTEM = 1983 STATE PLANE  
 TRANSVERSE MERCATOR PROJECTION  
 ALL DISTANCES ARE GROUND  
 SCALE FACTOR = 1.000027  
 PLAT BEARING = GRID BEARING  
 NO ROTATION

### LEGEND:

- - FND CONCRETE MONUMENT
- - SET PERMANENT REFERENCE MONUMENT, L.B. #6674
- - SET PERMANENT CONTROL POINT, L.B. #6674
- D.B. - DEED BOOK
- L.W.D.D. - LAKE WORTH DRAINAGE DISTRICT
- N.T.S. - NOT TO SCALE
- O.R.B. - OFFICIAL RECORD BOOK
- R.D. - ROAD, DYKE AND DITCH RESERVATION
- ESMT - EASEMENT
- P.B. - PLAT BOOK
- PGS. - PAGES
- P.S.M. - PROFESSIONAL SURVEYOR AND MAPPER
- R/W - RIGHT-OF-WAY
- S.T. - SURVEY TIE
- (TOT.) - TOTAL
- U.E. - UTILITY EASEMENT
- P.O.B. - POINT OF BEGINNING
- P.O.C. - POINT OF COMMENCEMENT
- L.A.E. - LIMITED ACCESS EASEMENT
- N 737648.0171  
E 905258.2326 DENOTES STATE PLANE COORDINATES



THIS INSTRUMENT PREPARED BY  
 PERRY C. WHITE, P.S.M. 4213, STATE OF FLORIDA  
 LAWSON, NOBLE AND WEBB, INC.  
 ENGINEERS PLANNERS SURVEYORS  
 420 COLUMBIA DRIVE, SUITE 110  
 WEST PALM BEACH, FLORIDA 33409  
 LB-6674

SUBDIVISION Boynton - Lyons  
 BOOK 110 PAGE 56  
 FLOOD MAP # 185A  
 ZONING TRAD  
 QUA # 50  
 SE  
 MAP NAME  
 749  
 P.D. NAME

